

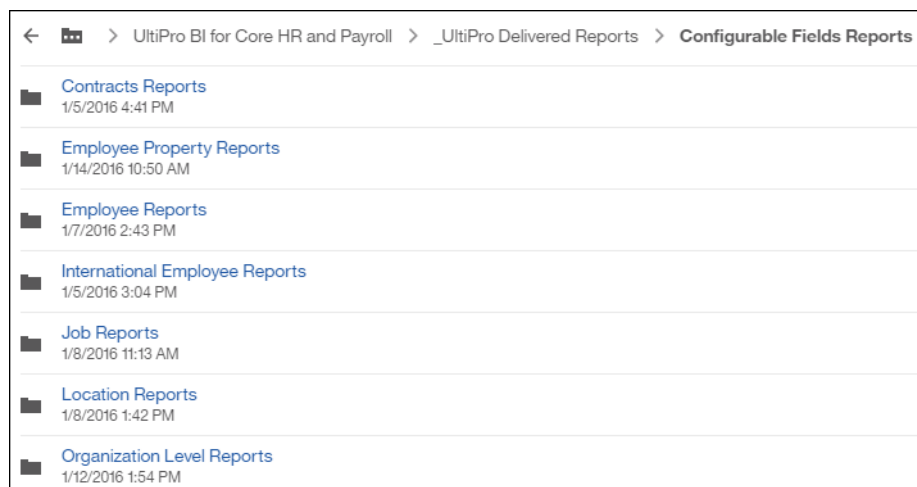
Report on Configurable Fields in Business Intelligence

Business Intelligence

Configurable Fields Reporting

The Platform Configurability feature in PlanSource HCM enables you to add new fields to PlanSource HCM pages. Use the delivered Business Intelligence reports in the Configurable Fields Reports folder to report on newly created fields.

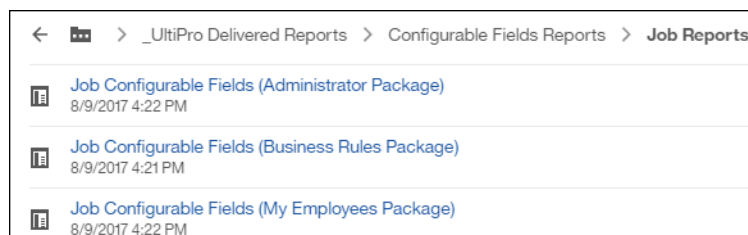
- Team Content > UltiPro BI Content > UltiPro BI for Core HR and Payroll > UltiPro Delivered Reports > Configurable Fields Reports



Configurable Fields Delivered Reports

Configurable Fields Reports have been created using more than one Business Intelligence package.

For example, there are three versions of the Job Configurable Fields report, each created from a different package: Administrator Package, Business Rules Package, and My Employees Package.

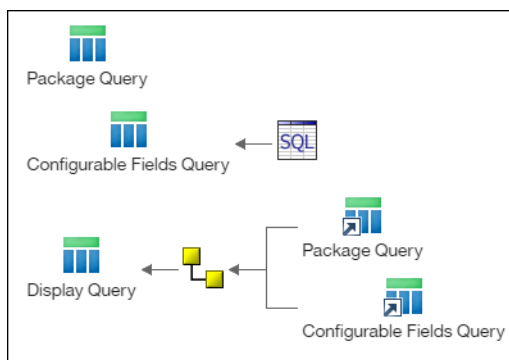


To determine which delivered report to use, you must decide what data items you want to report on, and then select the appropriate report version. If your report requires data items from the My Employees Package, then select the My Employees Package version. If you want to report across a different spectrum of data items, use the Administrator Package version or the Business Rules Package version, as appropriate.

Report Queries in Configurable Fields Reports

Every delivered Configurable Fields Report is constructed using a Package Query and a Configurable Fields Query that are joined to create a Display Query. Data items from the Display Query are then used to create your report output.

The Configurable Fields Query includes a SQL statement that, when run, pulls your PlanSource HCM configured field into the query for reporting.



Platform Configuration Classes Available for Reporting

The following reports support Business Intelligence reporting on platform configurability.

Report	Class	Package
Employee Specific Configurable Fields	Address, Employee, Person, Person Name, Phone Number	My Employees, Administrator
Company Specific Configurable Fields	Employment	My Employees, Administrator
Contacts Configurable Fields	Contacts	My Employees, Administrator
Employment Contracts Configurable Fields	Contract	My Employees, Administrator
Employee Property Configurable Fields	EmployeeProperty	My Employees, Administrator
International Employee Configurable Fields	International Employee	My Employees, Administrator

Report	Class	Package
Job Configurable Fields	Job	My Employees, Business Rules, Administrator
Location Configurable Fields	Location	My Employees, Business Rules, Administrator
Organization Level 1 Configurable Fields	Organization Level 1	My Employees, Business Rules, Administrator
Organization Level 2 Configurable Fields	Organization Level 2	My Employees, Business Rules, Administrator
Organization Level 3 Configurable Fields	Organization Level 3	My Employees, Business Rules, Administrator
Organization Level 4 Configurable Fields	Organization Level 4	My Employees, Business Rules, Administrator
Employment History Configurable Fields	Employment History	Administrator
Global Bank Account Configurable Fields	Global Bank Account	Administrator

View Queries in a Configurable Fields Report

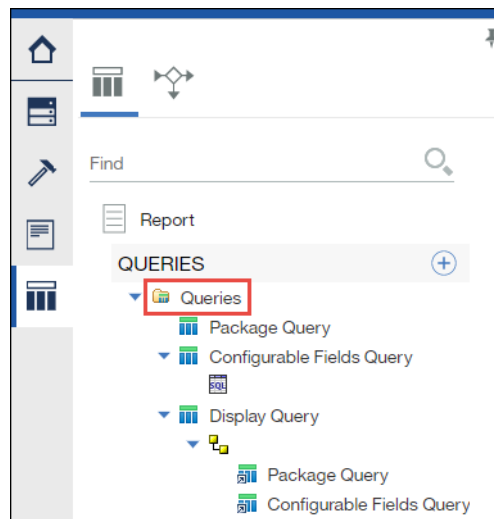
The Business Intelligence delivered configurable fields reports include three queries: Package Query, Configurable Fields Query, and Display Query.

In this example, platform configured fields are added to the Company Specific Configurable Fields report.

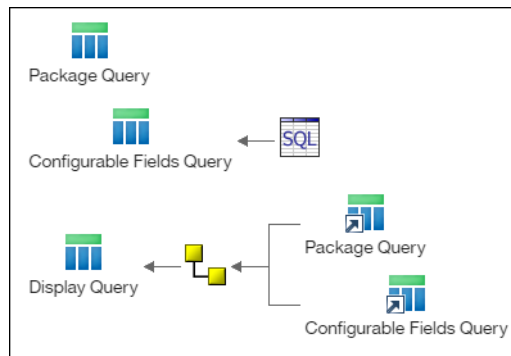
1. In Cognos Analytics, navigate to the location of a report.
 - Report: Company Specific Configurable Fields
 - Location: Team Content > UltiPro BI Content > UltiPro BI for Core HR and Payroll > UltiPro Delivered Reports > Configurable Fields Reports > Employee Reports
2. Select the More link opposite the report name, and then from the drop-down list select Edit Report.
3. From the Reporting side panel, select the Queries icon.



4. Select Queries.



The Query Explorer page appears.



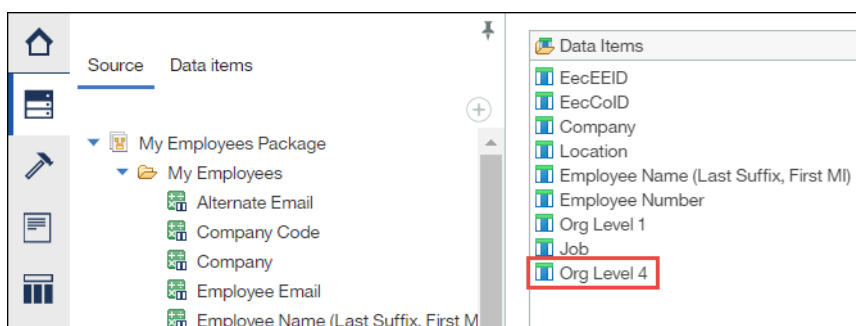
Add Data Items to the Package Query

The Package Query in a configurable fields report includes data items taken directly from the report package.

To report on additional data items (non-configurable fields) available in the package, add those data items to this query.

1. Double-click the Package Query.
2. From the side panel, select the Data icon.
3. Expand the namespace to view all data items in the package.
4. Drag and drop additional data items from the content pane to the Data Items pane, as needed.

In this example, the employee's department (Org Level 4) is added to the query.



Note

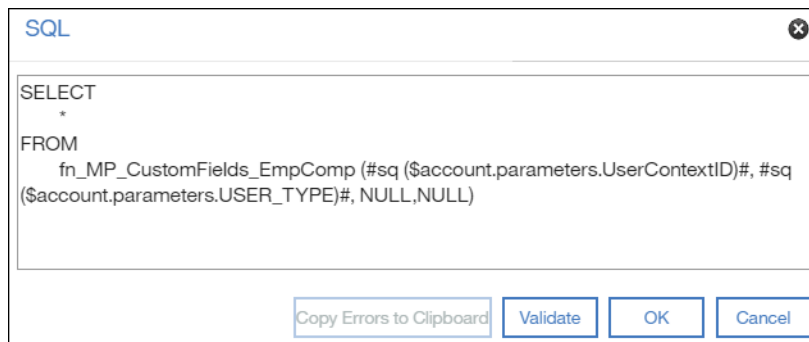
The EEID and CoID fields display in the Data Items pane. These data items do not appear on the report body. They are used to create a join relationship with the configurable field query data items.

Add Data Items to the Configurable Fields Query

The Configurable Fields Query includes new platform configured PlanSource HCM fields. Running a SQL script adds the new platform configured fields to this query.

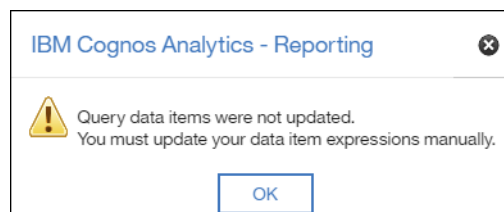
1. From the side panel, select the Queries icon, and then select Queries.
2. On the Query Explorer page, double-click the SQL icon to run the script.

The SQL dialog box appears.



3. Select OK.

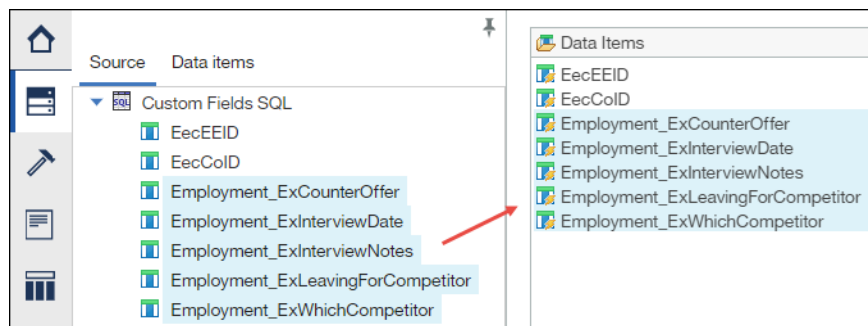
The report is validated, and a message appears.



4. Select OK.

5. Double-click the Configurable Fields Query icon, and then from the side panel select the Data icon.

6. From the Source tab, move the platform configured fields to the Data Items pane.

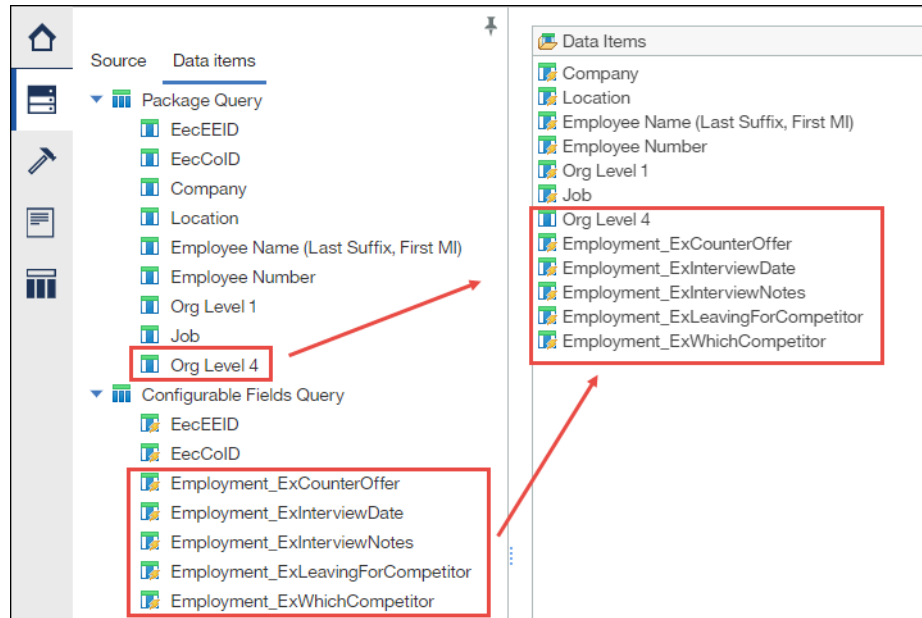


Add Data Items to the Display Query

The Display Query in a configurable fields report includes data items from the Package Query and the Configurable Fields Query. Data items that should appear in the report must be added to the Display Query.

1. From the side panel, select the Queries icon, and then select Queries.

2. On the Query Explorer page, double-click the Display Query.
3. From the side panel, select the Data icon and then select the Data Items tab.
4. Move data items from the Package Query and the Configurable Fields Query that should appear in the report to the Data Items pane.



Data items listed in the Display Query can now be used for reporting.

Add Platform Configured Fields to a Business Intelligence Report

The Platform Configurability feature in PlanSource HCM enables you to report on newly configured fields in Business Intelligence.

1. From the side panel, select the Pages icon, and then select Page1.
2. From the side panel, select the Data icon and then select the Data Items tab.
3. From the Display Query, move data items to the report layout, and then run the report.